

SERVICE WORKS

"UP ON TOP" NEWS

Hurricane Season 2008

"Preparation through education is less costly than learning through tragedy"

Max Mayfield, Former Director National Hurricane Center

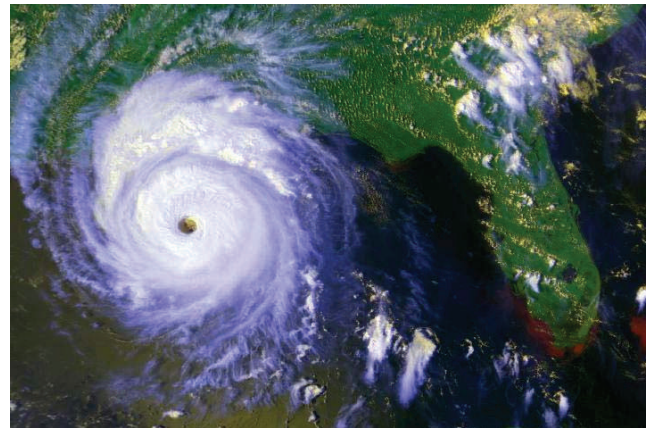
History teaches us that a lack of hurricane awareness and preparation are common threads among all hurricane disasters. By knowing your vulnerability and what actions you should take, you can reduce the effects of a hurricane disaster.

All hurricanes are dangerous, but some more so than others. The way storm surge, wind, and other factors combine determines the hurricane's destructive power. To make comparisons easier and to make the predicted hazards of approaching hurricanes clearer to

emergency forces the National Oceanic and Atmospheric Administration's hurricane forecasters use a disaster potential scale, which assigns storms to five categories. Category 1 is a minimum hurricane; category 5 is the worst case.

Before the storm arrives you should make yourself aware of the storm surge history and elevation in your area, learn the safe routes inland, and the locations of local shelters. In order to minimize damage to your building's roof in the event that you are in the path of a hurricane you should:

- Have someone in your organization with basic knowledge of roofing determine what types of roofs you have on your facilities.
- Have a basic roof plan sketch on hand to label damages.
- Keep any warranties you may have on your roofs in a safe and secure place where they can be easily located.
- Make sure that your roofs are free of debris and all trees are pruned back.



And most importantly keep our emergency number close at hand. Service Works in Tampa 813-626-7717, Service Works in Ft. Lauderdale 954-777-0203, and Service Works in Ft. Myers 239-560-6550.

Forecast for 2008

<http://tropical.atmos.colostate.edu/forecasts>

AccuWeather.com

<http://www.accuweather.com/hurricane>

Federal Emergency Management Agency

<http://www.fema.gov>

National Weather Service

<http://www.nws.noaa.gov>

Florida Automated Weather Network

<http://fawn.ifas.ufl.edu>

Hurricane and Tropical Storm Tracking

<http://www.hurricane.com>



5423 N. 59TH STREET
TAMPA, FL 33610
PHONE 813-626-7717
FAX 813-626-7248

3331 NW 55TH STREET
FT. LAUDERDALE, FL 33309
PHONE 954-777-0203
FAX 954-777-0283

6900 DANIELS PARKWAY
FT. MYERS, FL 33912
PHONE 239-560-6550
FAX 239-561-8520